



**Virginia State Police
Virginia Fusion Center
North Chesterfield, VA**

Criminal Intelligence & Analysis

Processes, Protocols & Applications

February 26 - March 1, 2024

presented by

Eva Rhody

Criminal Intelligence & Analysis Practitioner and Consultant

The Alpha Group

Professional Speakers and Trainers

Serving the Criminal Justice Community

We Turn Theory Into Practice™



About the Program

In these turbulent times of increasing demands on resources, the heightened sophistication of criminals, the rise of predatory gang activity and the multitude of illicit activities that threaten our communities each day, the need for a responsible, proactive approach for determining and gauging the risks posed by crime and criminals is of critical importance.

This one-week (40-hour) “hands-on” classroom-based course shows you how to use the “intelligence cycle” to easily guide the transformation of your raw collected data into actionable intelligence. You will learn how to recognize the hidden characteristics, protocols, and behaviors associated with complex criminal events; identify and link conspiratorial relationships and networks; discover the connections between criminality and finances and—in the segment on legal issues, ethical practices and 28 CFR Part 23 guidelines—how to effectively collect (covertly, overtly, and electronically), monitor, organize, store, analyze and use intelligence data relating to a wide range of criminal endeavors. You will also learn how to develop, manage, support, and successfully conduct analyses using a variety of collation and graphic management techniques. This knowledge can then be applied to the more complex investigations of crimes committed by predatory criminals, criminal enterprises, gangs, and the criminal conspirators who engage in economic/white collar crimes, drug/narcotic and sex offenses, human and weapons trafficking, identity theft and fraud, counterfeiting, corruption, and serial crimes.

Skill-building exercises enhance the “learn-by-doing” nature of the program. Actual investigations and criminal intelligence missions are also examined to further an understanding of the methods and techniques taught in the class and to demonstrate their practical application in today’s criminal environment.

The course curriculum meets and exceeds the training recommendations contained in the National Criminal Intelligence Sharing Plan (NCISP) and the Law Enforcement Analytic Standards developed by the International Association of Law Enforcement Intelligence Analysts (IALEIA). The NCISP is the most widely accepted source of guidance currently available for intelligence operations and training programs that support law enforcement efforts to establish a capacity for Intelligence-led policing. It is also POST certified in many states.

You Should Attend If:

- You are a newly-assigned law enforcement or corporate intelligence analyst, or a narcotics, gang or vice investigator, intelligence officer or analyst assigned to a fusion center, Homeland Security detail, terrorism or other specialized task force either within or external to your agency
- You are an experienced analyst, officer or investigator who has received little formal training related to the criminal intelligence process and function
- You now—or may later—supervise analysts, officers, investigators, a task force, first responders or other personnel who would benefit from a coordinated approach to developing and supporting criminal investigations
- You are employed by a prosecution unit that prepares the types of cases produced by the above personnel.

Regardless of your previous experience, this course is for you. You can always do your job better when you apply fresh ideas and techniques. We’ve made sure our seminars give you exactly what you need to put you at your peak!

What You Will Learn

This course will provide you with an arsenal of techniques you can use to uncover hidden criminal activity; develop, organize and link disparate data; support emerging and on-going criminal investigations; and identify the relationships between people, organizations and criminal events as well as between finances, proceeds and assets.

You will learn what criminal intelligence is—and what it is not—and how its real-world application can benefit 21st century policing. You will also learn **how to produce** actionable intelligence, **how to apply** it to criminal investigations, **how to deliver** dynamic intelligence briefings and **how to present** your material in court proceedings.

Designed for all federal, state, municipal, and military intelligence officers and analysts, this course will demystify essential professional skills involving:

Operational Issues

- **History of Intelligence and the Identification and Definition of What Intelligence is and What it is not**
- **The Mission, Objectives and Products of Intelligence Analysis and How They Benefit Today’s Policing Efforts**
- **The Differences Between Information, Investigation and Intelligence**
- **The 5-Step Process of the Intelligence Cycle**
- **Use of the Intelligence Cycle to Transform Information into Intelligence and How to Disseminate Intelligence**
- **The Differences Between and the Products of Tactical, Strategic, Operational, and Statistical Intelligence**
- **The Language and Terminology of Criminal Intelligence**
- **Inductive vs. Deductive Logic, Creative/Critical Thinking and Inference Development**
- **How to Identify Latent or Cloaked Crime Characteristics**
- **The Nature and Analysis of Repetitious Criminal Activity, Modus Operandi, Crime Patterns and Trends**
- **How to Work Smarter, Not Harder! Methods for Enhancing Efficiency and Effectiveness**
- **How to Identify Criminal Conspiracies, Organizations, Partnerships, Networks, Structures and “Jobs”**
- **Guidelines and Protocols for Targeting and Monitoring Criminal Conspiracies and Threats**
- **Hypothesis Development, Competing Hypotheses and the Development of a Collection “Plan”**
- **Follow the Money! Money Laundering, Financial Analysis and the Use of the Network Method to Discover the Source and Distribution of Hidden Assets**
- **Sources and Resources of information, Data and Criminal Intelligence**
- **The Creation and Use of Time Lines, Flow Charts, Link (Association) Charts and Matrices**
- **Communication Analysis: Analyzing Telephone, Text and Email Messages**
- **How to Prepare and Present Intelligence Briefings**
- **Using Word, PowerPoint and Excel in Graphic Analysis**
- **Hands-On, Skill-Building Exercises and Real-World Applications of Criminal Intelligence Analysis**
- **And much, much more**

About Our Criminal Intelligence and Analysis Program

Law enforcement officials send their sworn officers and civilian personnel to our *Criminal Intelligence and Analysis* courses because of our proven ability to provide them with high-quality, performance-oriented training. Class exercises are based on real-world crime problems officers, investigators and analysts are expected to solve each day. As such, students return to their agencies with not only the knowledge of **what** they should do, but, more importantly, **how** they should do it. Skills are developed by instructors who are intimately familiar with criminal intelligence analysis techniques, and by the students' use of our **comprehensive, easy-to-understand course materials**. These elements contribute to the continued popularity of our *Criminal Intelligence and Analysis* training programs. Our success, however, comes from our achievement of one important goal: *We turn Theory Into Practice.*™

What Others Say About Our Training

"Eva is an excellent instructor. She is extraordinarily knowledgeable, dynamic, energetic and very articulate. This was far and away the most engaging and thorough training I've had the pleasure to be a part of. I would recommend this class to anyone."

Vanessa West
Joplin Police Department

"The pace of the course was great and was presented in a way to be easily understood by everyone. This is a great course taught by a great instructor. I would love to take future courses taught by Eva."

Daniel Sturges
US Army-Fort Hood CID

"I thought the program was informative and extremely helpful. The instructor was well-versed in this type of work. I will definitely seek further opportunities through the Alpha Group."

Brianna Palmer
New York Police Department

"I believe this program is valuable training for any investigator who deals with long-term or complex investigations."

Jeremy Balders
Fort Worth Police Department

"It was great. My agency is starting a Real-Time Crime Center and is in the process of hiring ndw analysts. I will be suggesting that this training be mandatory. Hopefully, we can get Ms. Eva to Baton Rouge!"

Brandi Wilks
Baton Rouge Police Department

About the Criminal and Intelligence and Analysis Certificate Program

All participants in the Crime Analysis Applications Training Course are eligible to have their coursework credited toward the attainment of a Certificate issued by the California State Universities. Students who complete all curriculum requirements will receive a Certificate from California State University, Sacramento, verifying completion of their coursework in this unique field of law enforcement. They will also receive a Certificate from the internationally renowned Association of Law Enforcement Intelligence Units (LEIU) recognizing and acknowledging the successful completion of their program of study in Crime and Intelligence Analysis. Please see the section in this brochure entitled: "Earn Continuing Education Units."

About The Alpha Group

The Alpha Group is comprised of professional speakers, trainers, and researchers who provide their expertise and practical experience to criminal justice and public safety organizations. The company is widely recognized for its ability to provide training in crime and intelligence analysis, criminal investigative analysis, homeland security and terrorism analysis, criminal justice research methods and other such unique areas of law enforcement.

About Your Trainer

Eva Rhody is a nationally known and recognized criminal intelligence analyst who has provided her analytical expertise to the Federal Bureau of Investigation, Internal Revenue Service, US Secret Service, US Attorney's Office and many other state and federal law enforcement agencies.



A veteran of the Florida Department of Law Enforcement (FDLE) until her retirement from the agency, Eva's career included lengthy assignments as a Senior Management Analyst Supervisor and Criminal Intelligence Analyst with the FDLE's Office of Statewide Intelligence, the Florida

Fusion Center and the prosecution teams of the Office of Executive Investigations. Within this role Eva provided the investigative and intelligence analysis support that resulted in the successful prosecution of many public corruption cases, economic crime and fraud cases (such as Medicaid, healthcare, bid rigging/contract fraud, etc.), election law cases, illegal campaign contribution and other crimes against the government. As part of the investigative process, Eva conducted extensive financial, bank, credit card and securities analyses, analyzed FINCEN and Currency Transaction Reports, prepared net worth analyses, analyzed credit history information, conducted telephone toll analyses, created association matrices, link and flow charts, and designed Excel and Access computer databases to quickly capture, organize, and manage voluminous amounts of investigative and financial information.

A CMS Certified Instructor through the Florida Commission on Criminal Justice Standards and Training, these are the skills Eva Rhody now provides to Alpha Group students in her "hands-on," "learn-by-doing" crime and intelligence and analysis classes. Moreover, students also learn how to glean information from Social Media sites and how to use PowerPoint to create impressive presentations for exhibit to state and federal grand juries, statewide prosecutors, US Attorneys and other officers of the court.

The holder of a Top Secret Clearance from the US Department of Justice, Eva is also a Contract Investigator. In addition to her teaching she currently conducts in-depth federal background investigations for subjects and sources as they relate to positions of national security, or for those who require access to sensitive or classified government information.

Course Times

The course begins at 0800 on Monday, February 26, 2024 and concludes at 1200 on Friday, March 1, 2024. Course times are from 0800-1700 Monday through Thursday and from 0800-1200 on Friday.

Tuition and Course Inclusion Information

Course tuition prices, **without exception**, are based on the date we receive full payment for the course as shown below:

Early Registration: 7/21/23 to 8/21/23: Course fee is \$595.00.

Standard Registration: 8/22/23 to 2/4/24: Course Fee is \$625.00.

Late Registration: 2/5/24 to 2/26/23: Course Fee is \$650.00.

Tuition includes the 40-hour program of instruction and:

- All in-class course materials.
- A copy of ***Criminal Intelligence and Analysis: Processes, Protocols and Applications*** by Ken Sanz. Used extensively throughout the class, this comprehensive manual provides a reproduction of PowerPoint slides as well as copies of templates, graphics, charts, practical exercises, sources of information and supplementary reading materials authored by a number of leading authorities on criminal intelligence.
- A Bonus CD with textbooks on criminal intelligence and analysis; criminal intelligence guidelines, standards, protocols, policies and procedures; assessments of future forecasts and trends; studies and briefing papers on crime, terrorism and threats, investigative aids and resources; charting software; and links to open source research sites.

These are more than reference materials...they're the "silent partners" you'll take back to your job to help you increase your knowledge and strengthen your skills.

- An impressive certificate of graduation that will be presented to you upon completion of the course.

PLEASE NOTE: Tuition does not include lodging, meals, transportation to and from the meeting place, parking, items of a purely personal nature (pens, pencils, paper, etc.)

Registration Information

To register for the course, please contact The Alpha Group at (949) 600-5196 and request the registration form. **Payment must be received at time of registration to receive the registration prices shown above.** Please email the registration form to crimecrush@alphagroupcenter.com.



The Alpha Group

Professional Speakers and Trainers

Serving the Criminal Justice Community

We Turn Theory Into Practice™

P.O. Box 8 • Montclair, California 91763 • Telephone: (909) 989-4366 • Fax: (303) 663-7466

Email: crimecrush@alphagroupcenter.com

Website: www.alphagroupcenter.com

Payments, Substitutions and Cancellations

Payments can be made by credit card, or agency check. To make a credit card payment, please call The Alpha Group at (949) 600-5196. Please mail checks to: The Alpha Group, PO Box 8, Montclair, CA 91763. Anyone can substitute for you by notifying The Alpha Group. Any cancellations must be made by 2/4/24 to receive any refund due, if applicable. Early registration fees are nonrefundable. For other fees paid, any refund issued will be subject to a \$50.00 processing fee. No refunds will be given for any cancellations after 2/5/24, without exception. The Alpha Group reserves the right to substitute speakers should the featured presenter become incapacitated. In the unlikely event that the course is cancelled, the Alpha Group's liability shall be limited solely to refunding of tuition payments.

Course Location and Hotel

Accommodation Information

The host is Virginia State Police/Virginia Fusion Center, Matthew Slagley, 7700 Midlothian Turnpike, North Chesterfield, VA 23235. Class will be held in the Virginia State Police Academy building, Room 335. For a list of hotels in the area, view the "Hotel Information" section on page 7. Contact Matthew at matthew.slagley@vsp.virginia.gov with specific questions about the area.

Earn Continuing Education Units (Optional)

You can receive 3.6 Continuing Education Units (CEUs) from California State University upon successful completion of this course and the submission of a directed learning project. These units may be applied to the Certificate in Crime and Intelligence Analysis you will receive from the California State Universities. A modest registration fee made payable to the University is charged for this option. For additional details, or to apply for these units, please contact The Alpha Group Center for Crime and Intelligence Analysis at (909) 989-4366.

Is this Course Tax Deductible?

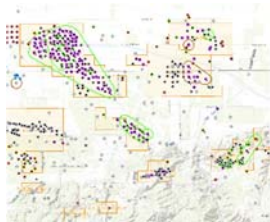
Skill-building and professional development programs such as the *Criminal Intelligence and Analysis* course are usually tax deductible. Check with your financial advisor to verify applicability of the tax law to your particular situation.

For Additional Information

If you have any questions or need additional information about the *Criminal Intelligence and Analysis* course, please contact Steve Gottlieb, Executive Director, by telephone at (909) 989-4366, or by email at crimecrush@alphagroupcenter.com. You may also write to us at The Alpha Group, P.O. Box 8, Montclair, CA 91763.

CRIME AND INTELLIGENCE ANALYSIS CERTIFICATE PROGRAM

*With Instruction Provided By
The Alpha Group Center for Crime And Intelligence Analysis*



Earn your certificate in Crime and Intelligence Analysis!

Insidious and ever present, the criminal element of our society continually becomes more sophisticated. New technology enhances law-breaking abilities, allowing for more specialized and complex crimes. In the Crime and Intelligence Analysis certificate program you will focus on skill development in collecting and analyzing crime data for the forecasting of future crime occurrences; developing target criminal profiles; documenting illicit relationships between people, organizations and events; and using statistical techniques to solve crime problems.

The Program also identifies and correctly defines crime problems through the use of intelligence products to create directed patrol or tactical action plans that lead to an effective police response.

POST Certification

The Crime and Intelligence Analysis Certificate Program is certified through the Commission on Peace Officer Standards and Training. Please contact us for POST credit eligibility information.

Is this the right program for you?

This program is designed for:

- Those recently employed in the crime and intelligence analysis field who may have had no formal training, limited experience or are not certified by a college or university.
- Supervisors of Crime and Intelligence analyst personnel.
- Professionals working in related fields outside of law enforcement who desire future employment as private sector crime and intelligence analysts.

To be successful in this program:

- Participants should have rudimentary knowledge of the criminal justice system and criminal law through completion of previous course work in criminal justice or on-the-job training

- Participants must be proficient in using Microsoft Excel, Word, PowerPoint and the Internet since all course assignments will require the use of one or more of these applications.

Benefits of the Program

Upon successful completion of the program, graduates receive a professional certificate in Crime and Intelligence Analysis from Sacramento State, and may also receive "On-the-job" training through a 400- hour practicum/ internship with a law enforcement agency.

Completion of these courses may also help to meet the requirements of, or earn qualifying points towards, IACA and IALEA certifications.



SACRAMENTO STATE
COLLEGE OF CONTINUING EDUCATION

Certificate Eligibility Requirements

The two college-level courses below (or applicable work experience) are required in order to complete the Crime and Intelligence Analyst Certificate Program:

- An Introduction to Criminal Justice Course
- A Criminal Law course

Note: Documentation of working knowledge through work experience requires a letter from your employer.

Register for Classes

To register for a class, please call The Alpha Group at (949) 600-5196, send us an email at: crimecrush@alphagroupcenter.com, or visit us at: www.alphagroupcenter.com.

Classes fill quickly and registration is on a first-come, first-served basis.

Course Descriptions

Crime Analysis: Data Analysis

Explore the history of crime analysis in law enforcement and learn how to develop, implement and operate a dynamic and fully functioning crime analysis program. Discover the link between crime analysis, community policing, COMPSTAT-styled programs and more. Practice creating and using tactical, strategic and administrative crime analysis products. (1.6 CEUs)

Crime Analysis: Applications

How do you define normal crime levels? How do you create and compare crime rates and prepare strategic and tactical action forecasts? Learn quantitative methods to establish the day, date, time and location criminals are likely to strike again. This includes an exploration of

future crime numbers, arrests, calls for services and other variables.

Prerequisite: Crime Analysis: Data Analysis (2.0 CEUs)

Law Enforcement Research and Statistical Methods: Forecasting

Become familiar with basic concepts and sources of crime analysis data and information. Practice collecting data, subjecting it to statistical analysis, and developing and testing hypotheses. Write conclusions on findings and in a manner that adheres to commonly accepted standards of research. (2.0 CEUs)

Law Enforcement Research and Statistical Methods: Sampling

Learn to prepare different reports required by law enforcement. This class will focus on methods; scales; statistical sampling/measurement; data presentation; and research ethics. The use of sampling techniques in the preparation of survey research projects is also explored. Prerequisite: Law Enforcement Research and Statistical Methods: Forecasting. (1.6 CEUs)

Criminal Intelligence: Basic Elements

Investigate terrorism, narcotics trafficking, commercialized prostitution, gambling and other conspiratorial activities. A look into the history of organized crime reveals methods to find, process, and analyze information to establish individual or organizational involvement in illegal activities. (2.0 CEUs)

Criminal Intelligence: Applications

Delve further into techniques for analyzing conspiratorial activities. Students learn to develop association matrices and telephone toll analyses for establishing relationships between conspirators. Learn Visual Investigative Analysis (VIA) charting techniques to

display event occurrences. Students get hands-on experience conducting cash flow, net worth, and other financial analyses used to identify money laundries, seizing assets, and the existence of basic skims and scams. Prerequisite: Criminal Intelligence: Basic Elements. (2.0 CEUs)

Criminal Investigative Analysis: Part I

Study offender behavior, and how it can be used to assist law enforcement. Look into criminal behavior through the offender's eyes and explore how offenders view their victims, themselves, and their crimes. (1.6 CEUs)

Criminal Investigative Analysis: Part II

Take a closer look at the choices made by offenders to understand the significance of interpreting those choices correctly. Students will also study the causes of criminal behaviors and choices of victim, crime and manner. Prerequisite: Criminal Investigative Analysis: Part I. (2.0 CEUs)

Crime Analysis: Practicum

Participants in the Crime and Intelligence Analysis program are required to complete a 400-hour supervised practicum in a crime and/or intelligence unit of a law enforcement agency. This allows for a demonstrated practical application of knowledge and skills acquired in the program. This requirement may only be waived for participants who have been, or are, employed full time for one year or more within a law enforcement agency as a crime and/or intelligence analyst. To participate in the required practicum, participants should expect to undergo a background investigation (Section 13511.5 CPC). (40.0 CEUs)



SACRAMENTO STATE
COLLEGE OF CONTINUING EDUCATION

1. Hotels

- *Holiday Inn Express Richmond E - Midlothian Turnpike* - 8710 Midlothian Turnpike, North Chesterfield, VA 23235
- *Hyatt Place Richmond/Arboretum* – 201 Arboretum Pl, Richmond, VA 23236
- *Extended Stay America* - North Chesterfield – Arboretum - 241 Arboretum Pl, Richmond, VA 23236
- *Fairfield Inn & Suites by Marriott Richmond Midlothian* - 150 N Pinetta Dr, Richmond, VA 23235
- *Four Points by Sheraton Richmond* - 9901 Midlothian Turnpike, Richmond, VA 23235
- *Residence Inn by Marriott Richmond West/Midlothian* - 1350 Johnston Willis Dr, Bon Air, VA 23235
- *DoubleTree by Hilton Hotel Richmond – Midlothian* - 1021 Koger Center Blvd, Richmond, VA 23235
- *Hampton Inn Richmond-Midlothian Turnpike* - 800 Research Rd, Richmond, VA 23236
- *La Quinta Inn & Suites by Wyndham Richmond-Midlothian* - 1301 Huguenot Rd, Midlothian, VA 23113