



**Regional Organized
Crime Information
Network
(ROCIC)**

Nashville, TN

Criminal Investigative

Analysis Training

(Psychological Profiling)

October 9 - 13, 2023

Presented by

Kenneth Morris



The Alpha Group

Professional Speakers and Trainers

Serving the Criminal Justice Community

We Turn Theory Into Practice™

The Program

The need for Criminal Investigative Analysis (formerly referred to as Psychological Profiling) training has become increasingly recognized over the past few years as law enforcement agencies across the country encounter an ever increasing number of rapes and homicides committed by unknown offenders. As we move through this decade and beyond, it seems apparent that police administrators will require highly trained, competent people to collect, collate, and analyze data to help them effectively deal with these problems. But before any problem can be resolved, it first must be identified. Armed with the information regarding the types of crimes occurring in their jurisdictions, investigators, if properly trained, are uniquely positioned to utilize the information presented in this course to not only identify when serial crimes are occurring, but to identify the personality and behavioral characteristics of the type of person most likely to have committed the crimes. However, while criminal profiling is particularly useful in cases of serial rape and homicide, it also can be extremely useful in the investigation of many single cases of rape or homicide.

This is a one-week (40 hour) “hands-on” program that provides you with techniques you can use immediately to solve the real-world problems that daily confront the law enforcement community. Once trained, you will be able to save countless hours by focusing your investigations on the most likely type of person to have committed the immediate crime, predict what the offender did before the offense, what he did during the crime, and anticipate his expected post-offense behavior following the event. In investigations with extensive suspect lists, the savings in time to develop lead prioritizations can be substantial.

Presented in a comfortable, non-threatening environment that permits both individualized and group instruction, the course takes a “learn-by-doing” approach that gives students many opportunities to actually experience the tasks associated with the criminal profiling process. Participants will be taught how to read a crime scene and how to use crime scene information to develop a “portrait” of the offender’s childhood, family background, sexual history, appearance, lifestyle, and other relevant personal information which is then used to identify the type of person most likely to have committed the immediate crimes. This format of instruction allows for not only a highly interactive exchange between the student and the facilitator, but offers unique opportunities for group interaction and collaboration as well.

You Should Attend If:

- You are a sex crimes investigator
- You are a homicide investigator
- You are a patrol officer who may be in a position to recognize the characteristics of serial crimes
- You are a crime analyst responsible for providing assistance to sex crimes or homicide investigators

Regardless of your previous experience with analytical methods, this course is for you. You can always do your job better when you apply fresh ideas and techniques. We’ve made sure our seminars give you exactly what you need to put you at your peak!

Here’s What You Will Learn

This course will provide you with an arsenal of techniques you can use to identify the physical, behavioral, and personality characteristics of offenders who commit the crimes of rape and homicide, particularly serial rape and homicide offenses. We’ll demystify essential professional skills involving:

Operational Issues

- How to Recognize the Serial Aspects of Crime
- Uses and Misuses of Investigative Analysis Techniques
- Telltale Clues—How to Recognize the All-Important Signatures of Violent Crime Offenders
- Wound Examinations and the “Hidden Information” They Provide About Victims and Killers
- How To Link Cases Together
- How to Identify the Physical, Psychological, Behavioral, Emotional and Personality Characteristics of Offenders Who Commit the Crimes of Rape and Homicide
- Answering the BIG Questions— How to Determine If, When, And Where Offenders May Strike Again, and Who May be the Next Likely Target
- Work Smarter, Not Harder!—How to Focus an Investigation
- How to Develop Suspect Leads for “Arresting” Results
- How to Prepare Comprehensive Reports of Analyses
- Beware the Femme Fatale!—How Female Serial Killers Differ from Male Serial Killers
- Types of Serial Homicide Offenders—Differences between Organized, Disorganized, Mixed, Lust, and Sadistic Killers
- Types of Serial Rape Offenders—Differences between Power Reassurance, Power Assertive, Anger Retaliation and Anger Excitation Rapists
- Critical Differences in Crime Scenes—How to Instantly Distinguish between Abduction Sites, Killing Sites, And Dump Sites
- Who Murders—and Why! Social and Environmental Factors that Shape the Killer’s Life

The Profiling Process

Through lecture, demonstration, and the use of audio and video media, all participants will have the opportunity to analyze cases involving actual killers and rapists and to then develop and practice their profiling skills by creating their own in-class profiles. This format of instruction not only allows for a highly interactive exchange between participants and the facilitator, but creates a climate that is highly conducive to the learning process as well!

About Our Criminal Investigative Analysis Programs

Law enforcement officials send their sworn officers and civilian personnel to our criminal investigative analysis courses because of our proven ability to provide them with high-quality, performance-oriented training. Class exercises are based on real-world crime problems investigators are expected to solve each day. As such, students return to their agencies with not only the knowledge of **what** they should do, but, more importantly, **how** they should do it. Skills are developed by instructors who are intimately familiar with criminal investigative analysis techniques, and by the students' use of our **comprehensive, easy-to-understand course materials**. These elements contribute to the continued popularity of our Criminal Investigative Analysis training programs. Our success, however, comes from our achievement of one important goal: *We turn Theory Into Practice.*™

What Others Say About Our Training

"Agent Morris is one of the best criminal profilers that I have had the pleasure of working with. He recently assisted me on a homicide investigation and his criminal investigative analysis was very helpful in the case."

W.R., Investigator

"It was fascinating and actually eerie the way some of the things Ken said we would find jumped out when we started digging into this guy's background."

T.C., Sex Crimes Investigator

"This is just the tip of the iceberg right now involving the arrestee in our case. I just thought you might want to know how your profile compared, which I thought was pretty extraordinary!"

Sgt. M.S., Investigator

About the Crime and Intelligence Certification Program

All participants in the Criminal Investigative Analysis Training Course are eligible to have their coursework credited toward the attainment of a Certificate Award in Crime and Intelligence Analysis (CCIA) and their CCIA Credential. This program is sponsored by the California Department of Justice and the California State Universities. Students who complete all credential requirements will receive a certificate from California State University Sacramento to verify their academic achievement. The California Department of Justice, in recognition of the University Award, will subsequently bestow the title of Certified Crime Analyst upon, and grant the credential to, all students who successfully complete the credential program. Please see the section in this brochure entitled "Continuing Education Units."

About The Alpha Group

The Alpha Group is comprised of professional speakers, trainers, and researchers who provide their expertise and practical experience to criminal justice, public safety and victim service organizations. The organization is widely recognized for its ability to provide training in crime and intelligence analysis, criminal investigative analysis, statement analysis, homeland security and terrorism analysis, threat assessment, criminal justice research methods and other such unique areas of law enforcement.

About Your Trainer

Kenneth Morris, B.A., is a veteran police officer who specializes in the art of criminal investigative analysis. As one of only 75 active criminal profilers in the world, Ken has been providing behavioral assistance to local, state, federal and international law enforcement agencies for over a decade.

Ken's unique expertise began with his service as an investigator in the Violent Crimes Unit for the Bureau of Criminal Investigations of the Virginia State Police. In 2002 he entered the renowned and highly esteemed Criminal Profiling Certification Program of the International Criminal Investi-



gative Analysis Fellowship, an organization whose membership includes active and retired profilers from the Federal Bureau of Investigation, the Bureau of Alcohol, Tobacco and Firearms, the Texas Rangers, Royal Canadian Mounted Police, Ontario Provincial Police, the New Scotland Yard and numerous other superb law enforcement agencies from throughout the world. His profiling Certification included the review and assessment of hundreds of active cases and his participation in over

sixty specialized crime topics taught by nationally recognized experts in the field of violent crime and sexual deviancy research.

Honored as the recipient of Virginia's prestigious Commonwealth of Valor Award in 2000, Ken Morris is a graduate of the Virginia Forensic Science Academy and a court certified expert on bloodstain pattern analysis. He has served as Vice President of the Virginia Homicide Investigators' Association and, among others, as a member of the Mid-Atlantic Cold Case Homicide Investigator's Association, Virginia Department of Forensic Science Academy Alumni Association and the Tidewater Cold Case Homicide Working Group.

Ken Morris worked many notable investigations during his career, including the Washington, D.C. sniper case, the Colonial Parkway serial murders, the Lisk-Silva serial homicides and the disappearance and murder of college student Taylor Behl. He has also lectured extensively on violent crime topics to law enforcement officers, prosecuting attorneys, medical examiners, forensic nurses, and crime analysts throughout North America.

Course Times

The course begins at 0800 on Monday, October 9, 2023 and concludes at 1200 on Friday, October 13, 2023. Course times are from 0800-1700 Monday through Thursday and from 0800-1200 on Friday.

Tuition and Course Inclusion Information

Course tuition prices, **without exception**, are based on the date we receive full payment for the course as shown below:

Early Registration: 10/31/22 to 12/1/22: Course fee \$595.00.

Standard Registration: 12/2/22-9/17/23: Course Fee \$625.00.

Late Registration: 9/18/23 to 10/4/23: Course Fee \$650.00.

Tuition includes the 40-hour program of instruction and:

- All in-class course materials.
- A copy of *The Criminal Investigative Analysis Study Guide and Workbook*. This manual of several hundred pages of handouts, class notes, supplemental reading material, glossary, and suggested reading list will be used extensively throughout the class.
- A CD of *Managing Death Investigations* by Arthur Westveer, Jr., U.S. Department of Justice, Federal Bureau of Investigation, containing over 600 pages of material for the investigation of many types of homicides.

These are more than reference materials...they're the "silent partners" you'll take back to your job to help you increase your knowledge and strengthen your skills.

- An impressive certificate of graduation that will be presented to you upon completion of the course.

PLEASE NOTE: Tuition does not include lodging, meals, transportation to and from the meeting place, parking, or items of a purely personal nature (pens, pencils, paper, etc.)

Registration Information

To register for the course, please contact The Alpha Group at (949) 600-5196 and request the registration form. **Payment must be received at time of registration to receive the registration prices shown above.** Please email the registration form to crimecrush@alphagroupcenter.com.



The Alpha Group

Professional Speakers and Trainers

Serving the Criminal Justice Community

We Turn Theory Into Practice™

P.O. Box 8 • Montclair, California 91763 • Telephone: (909) 989-4366

Email: crimecrush@alphagroupcenter.com

Website: www.alphagroupcenter.com

Payments, Substitutions and Cancellations

Payments can be made by credit card or agency check. To make a credit card payment, please call The Alpha Group at (949) 600-5196. Please mail checks to: The Alpha Group, PO Box 8, Montclair, CA 91763. Anyone can substitute for you by notifying The Alpha Group. Any cancellations must be made by 9/17/23 to receive any refund due, if applicable. Early registration fees are nonrefundable. For other fees paid, any refund issued will be subject to a \$50.00 processing fee. No refunds will be given for any cancellations after 9/18/23, without exception. The Alpha Group reserves the right to substitute speakers should the featured presenter become incapacitated. In the unlikely event that the course is cancelled, the Alpha Group's liability shall be limited solely to refunding of tuition payments.

Course Location and Hotel

Accommodation Information

Please contact the course host for course location and hotel accommodation information. The host is Regional Organized Crime Information Center (ROCIC), Kathleen Homer, 545 Marriott Dr, Ste 850, Nashville, TN 37214. You may contact Jarrett by phone at (615) 234-5421 or by email at kahomer@rocic.riss.net. This class is for Law Enforcement only. Official, government-issued credentials are required and will be checked before entering the ROCIC training facility. If credentials are not provided, participants **will not** be allowed to attend the class.

Earn Continuing Education Units (Optional)

You can receive 3.6 Continuing Education Units (CEUs) from California State University upon successful completion of this course and the submission of a directed learning project. These units may be applied to the Certificate in Crime and Intelligence Analysis you will receive from the California State Universities. A modest registration fee made payable to the University is charged for this option. For additional details, or to apply for these units, please contact The Alpha Group Center for Crime and Intelligence Analysis at (909) 989-4366.

Is This Course Tax Deductible?

Skill-building and professional enhancement programs such as the *Criminal Investigative Analysis Course* are usually tax deductible. Check with your financial advisor to verify applicability of the tax law to your particular situation.

For Additional Information

If you have any questions or need additional information about the *Criminal Investigative Analysis Course*, please contact Steve Gottlieb, Executive Director, by telephone at (909) 989-4366, or by email at crimecrush@alphagroupcenter.com. Or, you may write to us at The Alpha Group, P.O. Box 8, Montclair, CA 91763.



Directions, Hotel Recommendations and Additional Information



ROCIC James T. Rogers Training Room
545 Marriott Drive, 8th floor Suite 820
Nashville, TN 37214

From North:

Take 65 South toward Nashville
Take Exit 90 B, Briley Parkway East
Take Exit 7, Elm Hill Pike and turn left off of the exit
Turn right at second traffic light (Marriott Dr.)
ROCIC is in the second building on the left
(Building “Three”), 8th Floor

From South:

Take 65 North toward Nashville
Pick up 440 East toward Knoxville
When 440 ends, get on 40 East
Exit Briley Pkwy North (2nd Briley Pkwy Exit)
Take Exit 7, Elm Hill Pike and turn right off of the exit
Turn right at first traffic light (Marriott Drive)
ROCIC is in the second building on the left
(Building “Three”), 8th Floor

Parking at ROCIC:

Do not park under the garage OR in the 2-hour Visitor
Parking. Above the garage and straight back is available
for attendee parking.

From Knoxville *or* Nashville Airport:

Take 40 West toward Nashville
Exit Briley Pkwy North
Take Exit 7, Elm Hill Pike and turn right off of the exit
Turn right at the first traffic light (Marriott Drive)
ROCIC is in the second building on the left (Building “Three”),
8th Floor

From Memphis:

Take 40 East toward Nashville
Pick up 440 East toward Knoxville
When 440 ends, get back on 40 East
Exit Briley Pkwy North (the 2nd Briley Pkwy Exit)
Take Exit 7, Elm Hill Pike and turn right off of the exit
Turn right at the first traffic light (Marriott Drive)
ROCIC is in the second building on the left (Building “Three”),
8th Floor

From Chattanooga:

Take 24 West toward Nashville
Exit Briley Pkwy North (2nd Briley Pkwy Exit)
Take Exit 7, Elm Hill Pike and turn right off of the exit
Turn right at the first traffic light (Marriott Drive)
ROCIC is in the second building on the left (Building “Three”),
8th Floor

Doubletree Nashville Airport Hotel - (.9 miles)

2424 Atrium Way, Nashville, TN 37214

The Doubletree is ROCIC’s recommended hotel. Rooms are available at the Doubletree Nashville Airport Hotel at a discounted ROCIC rate of \$123 + tax. This rate includes complimentary breakfast and shuttle service.

To book reservations at the Doubletree Nashville Airport Hotel:

- **By Phone: (615) 889-8889; Reference ROCIC Corporate Account # 560076397**
- **Online: [CLICK HERE for the Doubletree Website](#)**
 - Enter Dates and room information
 - Click “add special rate code”
 - Copy and Paste this code **0560076397** in the Corporate Account box

Other Area Hotels:

Towneplace Suites by Marriott - (1.4 miles)

2700 Elm Hill Pike, Nashville, TN 37214

To book reservations at the TownePlace Suites Nashville Airport:

- By Phone: (615) 232-3830; corporate code A3042
- Online: [CLICK HERE for reservation link](#)

Best Western PLUS Nashville Airport Hotel - (2.1 miles)

911 Airport Center Drive Nashville, TN 37214

[Click here to book discounted rate reservations](#)

Nashville Airport Marriott - (.3 miles)

600 Marriott Drive, Nashville, TN 37214

To book reservations at the Marriott call: (615) 889-9300

Embassy Suites Nashville Airport Hotel - (1.19 miles)

10 Century Blvd., Nashville, TN 37214

To book reservations at the Embassy Suites call: (615) 871-0033

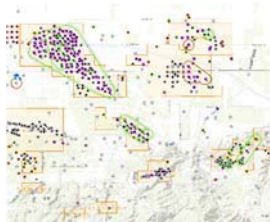
Homewood Suites by Hilton Nashville-Airport - (1.42 miles)

2640 Elm Hill Pike, Nashville, TN 37214

To book reservations at the Homewood Suites call: (615) 884-8111

CRIME AND INTELLIGENCE ANALYSIS CERTIFICATE PROGRAM

*With Instruction Provided By
The Alpha Group Center for Crime And Intelligence Analysis*



Earn your certificate in Crime and Intelligence Analysis!

Insidious and ever present, the criminal element of our society continually becomes more sophisticated. New technology enhances law-breaking abilities, allowing for more specialized and complex crimes. In the Crime and Intelligence Analysis certificate program you will focus on skill development in collecting and analyzing crime data for the forecasting of future crime occurrences; developing target criminal profiles; documenting illicit relationships between people, organizations and events; and using statistical techniques to solve crime problems.

Crime and Intelligence Analysis also identifies and correctly defines crime problems using intelligence information to create directed patrol or tactical action plans leading to an effective police response.

POST Certification

The Crime and Intelligence Analysis Certificate Program is certified through the Commission on Peace Officer Standards and Training. Please contact us for POST credit eligibility information.

Is this the right program for you?

The program is designed for:

- Those recently employed in the crime and intelligence analysis field who may have no formal training, limited experience or are not certified by a college or university.
- Supervisors of Crime and Intelligence analyst personnel.
- Professionals working in related fields outside of law enforcement who desire future employment as crime and intelligence analysts

To be successful in this program:

- Participants should have rudimentary knowledge of the criminal justice system and criminal law through completion of previous course work in criminal justice or on-the-job training

- Participants must be proficient in using Microsoft Excel, Word, PowerPoint and the internet (all assignments will require the use of one or more of these applications)

Benefits of the Program

Upon successful completion of the program, graduates receive a professional certificate in Crime and Intelligence Analysis from Sacramento State, as well as from the Association of Law Enforcement Intelligence Units (LEIU).

They may also receive "On-the-job" training through a 400-hour practicum/internship with a law enforcement agency.

Completion of these courses may also help to meet the requirements of, or earn qualifying points towards, IACA and IALEA certifications.



SACRAMENTO STATE
COLLEGE OF CONTINUING EDUCATION

Certificate Eligibility Requirements

The two college-level courses below (or applicable work experience) are required in order to complete the Crime and Intelligence Analyst Certificate Program:

- An Introduction to Criminal Justice Course
- A Criminal Law course

Note: Documentation of working knowledge through work experience requires a letter from your employer.

Register for Classes

To register for a class, please call The Alpha Group at (949) 600-5196, send us an email at: crimecrush@alphagroupcenter.com, or visit us at: www.alphagroupcenter.com.

Classes fill quickly and registration is on a first-come, first-served basis

Course Descriptions

Crime Analysis: Data Analysis

Explore the history of crime analysis in law enforcement and learn how to develop, implement and operate a dynamic and fully functioning crime analysis program. Discover the link between crime analysis, community policing and crime prevention programs. Practice creating and using tactical, strategic and administrative crime analysis products. (1.6 CEUs)

Crime Analysis: Applications

How do you define normal crime levels? How do you create and compare crime rates and prepare strategic and tactical action forecasts? Learn quantitative methods to establish the day, date, time and location criminals are likely to strike again. This includes an exploration of

future crime numbers, arrests, calls for services and other variables.

Prerequisite: Crime Analysis: Data Analysis (2.0 CEUs)

Law Enforcement Research and Statistical Methods: Forecasting

Become familiar with basic concepts and sources of crime analysis data and information. Practice collecting data, subjecting it to statistical analysis, and developing and testing hypotheses. Write conclusions on findings and in a manner that adheres to commonly accepted standards of research. (2.0 CEUs)

Law Enforcement Research and Statistical Methods: Sampling

Learn to prepare different reports required by law enforcement. This class will focus on methods; scales; statistical sampling/measurement; data presentation; and research ethics. The use of sampling techniques in the preparation of survey research projects is also explored. Prerequisite: Law Enforcement Research and Statistical Methods: Forecasting. (1.6 CEUs)

Criminal Intelligence: Basic Elements

Investigate terrorism, narcotics trafficking, commercialized prostitution, gambling and other conspiratorial activities. A look into the history of organized crime reveals methods to find, process, and analyze information to establish individual or organizational involvement in illegal activities. (2.0 CEUs)

Criminal Intelligence: Applications

Delve further into techniques for analyzing conspiratorial activities. Students learn to develop association matrices and telephone toll analyses for establishing relationships between conspirators. Learn Visual Investigative Analysis (VIA) charting techniques to

display event occurrences. Students get hands-on experience conducting cash flow, net worth, and other financial analyses used to identify money laundries, seizing assets, and the existence of basic skims and scams. Prerequisite: Criminal Intelligence: Basic Elements. (2.0 CEUs)

Criminal Investigative Analysis: Part I

Study offender behavior, and how it can be used to assist law enforcement. Look into criminal behavior through the offender's eyes and explore how offenders view their victims, themselves, and their crimes. (1.6 CEUs)

Criminal Investigative Analysis: Part II

Take a closer look at the choices made by offenders to understand the significance of interpreting those choices correctly. Students will also study the causes of criminal behaviors and choices of victim, crime and manner. Prerequisite: Criminal Investigative Analysis: Part I. (2.0 CEUs)

Crime Analysis: Practicum

Participants in the Crime and Intelligence Analysis program are required to complete a 400-hour supervised practicum in a crime and/or intelligence unit of a law enforcement agency. This allows for a demonstrated practical application of knowledge and skills acquired in the program. This requirement may only be waived for participants who have been, or are, employed full time for one year or more within a law enforcement agency as a crime and/or intelligence analyst. To participate in the required practicum, participants should expect to undergo a background investigation (Section 13511.5 CPC). (40.0 CEUs)



SACRAMENTO STATE
COLLEGE OF CONTINUING EDUCATION